

OSM Map Import Guide for Mapping Mode in Spike.

OSM Map Import Guide

Published 2/27/2023
©2023, Signal Hound
1502 SE Commerce Ave, Suite 101
Battle Ground, WA
Phone 360-313-7997

This information is being released into the public domain in accordance with the Export Administration
Regulations 15 CFR 734

Contents

1 Introduction.....	4
1.1 OSM Overview.....	4
1.2 Requirements	4
2 Map Import Guide.....	5
2.1 Navigate to the OSM website.....	5
2.2 Display the Referencing Coordinates.....	6
2.3 Display the Share Panel for Image Download.....	7
2.4 Open the Map in Spike	8
2.5 Set the Georeferencing Coordinates in Spike	10
2.6 Verify Correctness	11
3 Troubleshooting	12

Introduction

1 Introduction

The purpose of this document is to provide instructions for importing a map from OpenStreetMap (OSM) into Mapping Mode in Spike, ensuring it is correctly georeferenced.

1.1 OSM Overview

[OpenStreetMap](#) is a free source of worldwide geographic data, including street maps, with nonrestrictive licensing. It is supported by the international nonprofit OpenStreetMap Foundation.

1.2 Requirements

- A Signal Hound spectrum analyzer.
- The [Spike](#) spectrum analyzer software installed on a PC meeting the software and hardware requirements specified in the [Spike User Manual](#) and the corresponding spectrum analyzer device manual.

Map Import Guide

2 Map Import Guide

This section outlines the steps required to import a map from OpenStreetMap into Mapping Analysis Mode of the Spike spectrum analyzer software.

2.1 Navigate to the OSM website

In a web browser, navigate to <https://www.openstreetmap.org/>.

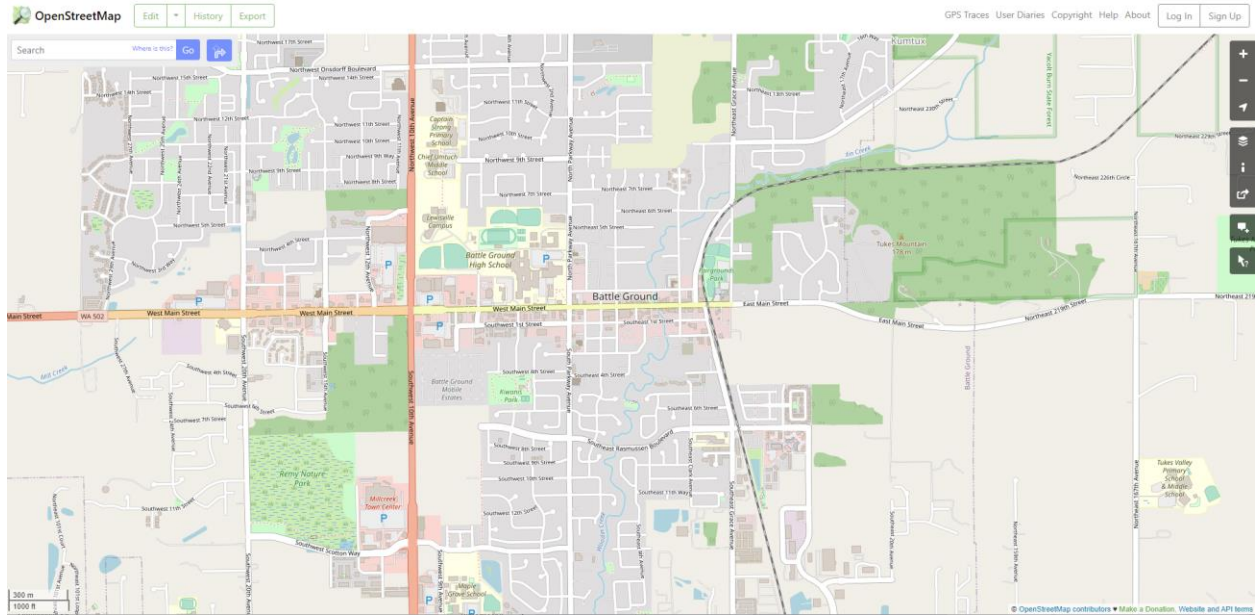


Figure 1: The OpenStreetMap website.

Map Import Guide

2.2 Display the Referencing Coordinates

Open the Export panel by clicking the *Export* button in the upper left navigation bar. The bounding longitude and latitude coordinates will be displayed.

WARNING: The referencing coordinates will show **exactly** what is visible in the map window. So when the Share panel is pulled up in the next step, covering up some of the map, it will change the referencing coordinates slightly. Resizing the web browser window will also change the coordinates. Therefore, make sure that both panels are open, and the browser window is not resized, when downloading and taking down the coordinates.

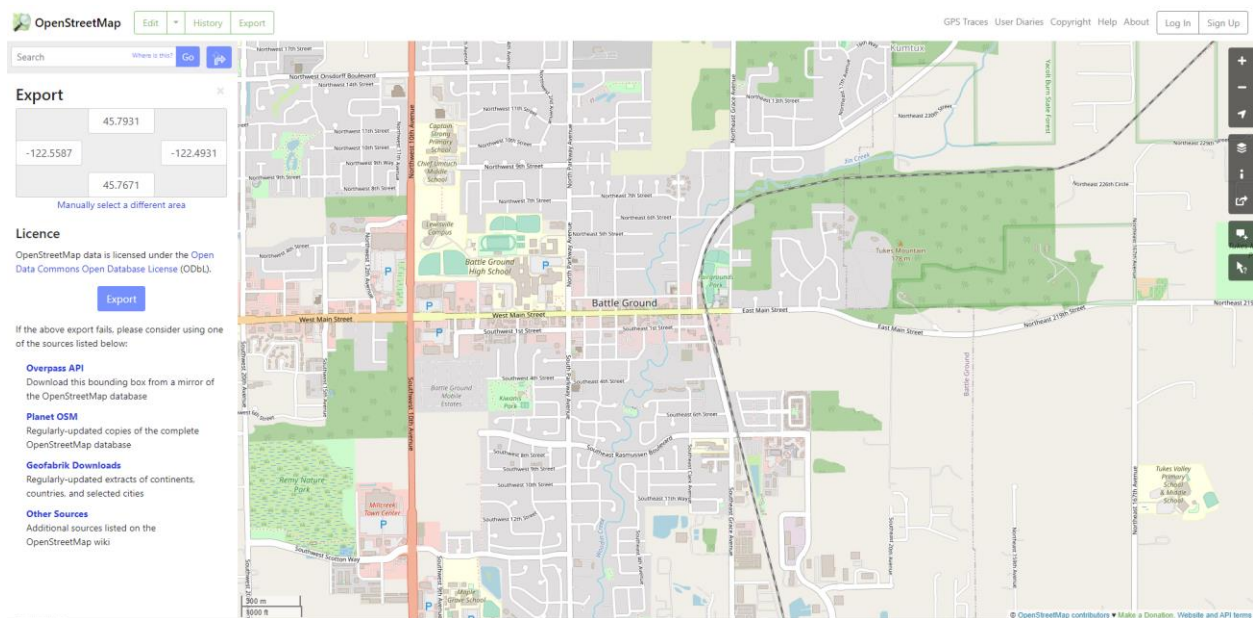


Figure 2: An OSM map with Export panel visible.

Map Import Guide

2.3 Display the Share Panel for Image Download

Open the Share panel by clicking on the share icon in the upper right vertical toolbar. Set the scale to the desired size so the map will fit comfortably on your screen, within the map view area in Mapping Analysis Mode in Spike.

Download the map by clicking the blue *Download* button.

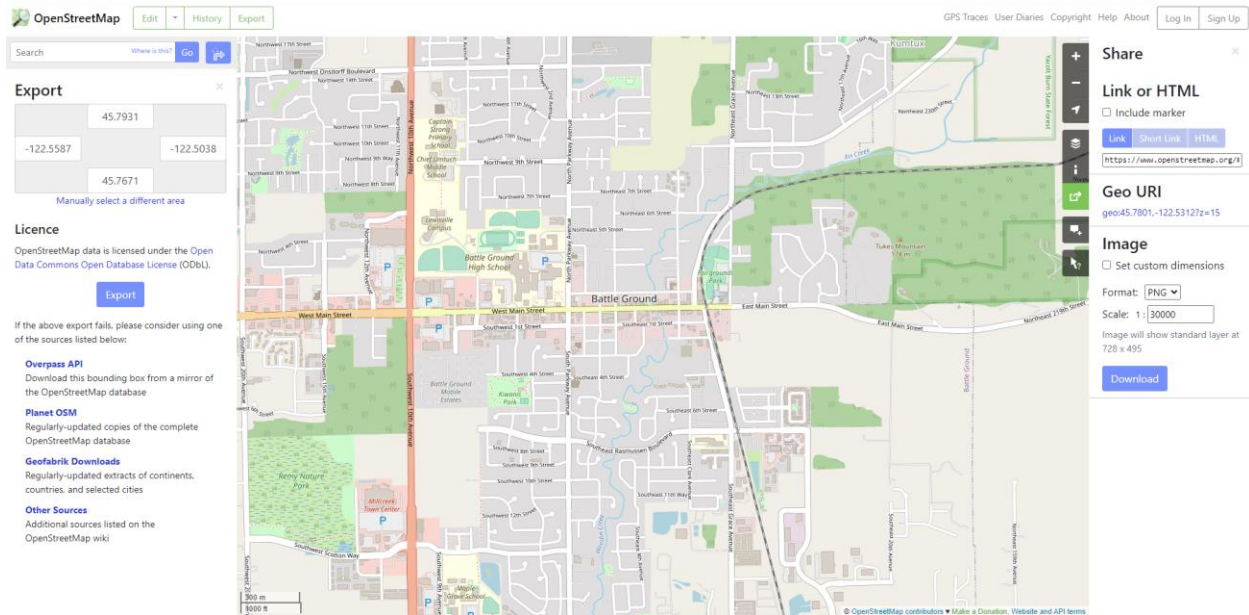


Figure 3: An OSM map with Export and Share panels visible.

Map Import Guide

2.4 Open the Map in Spike

Open Spike, and navigate to Mapping mode by clicking *Analysis Mode* in the menu bar, and then *Mapping*.

Click the *File* menu in the toolbar at the top of the map view area, choose *Load Map*, and select the image you downloaded from OSM.

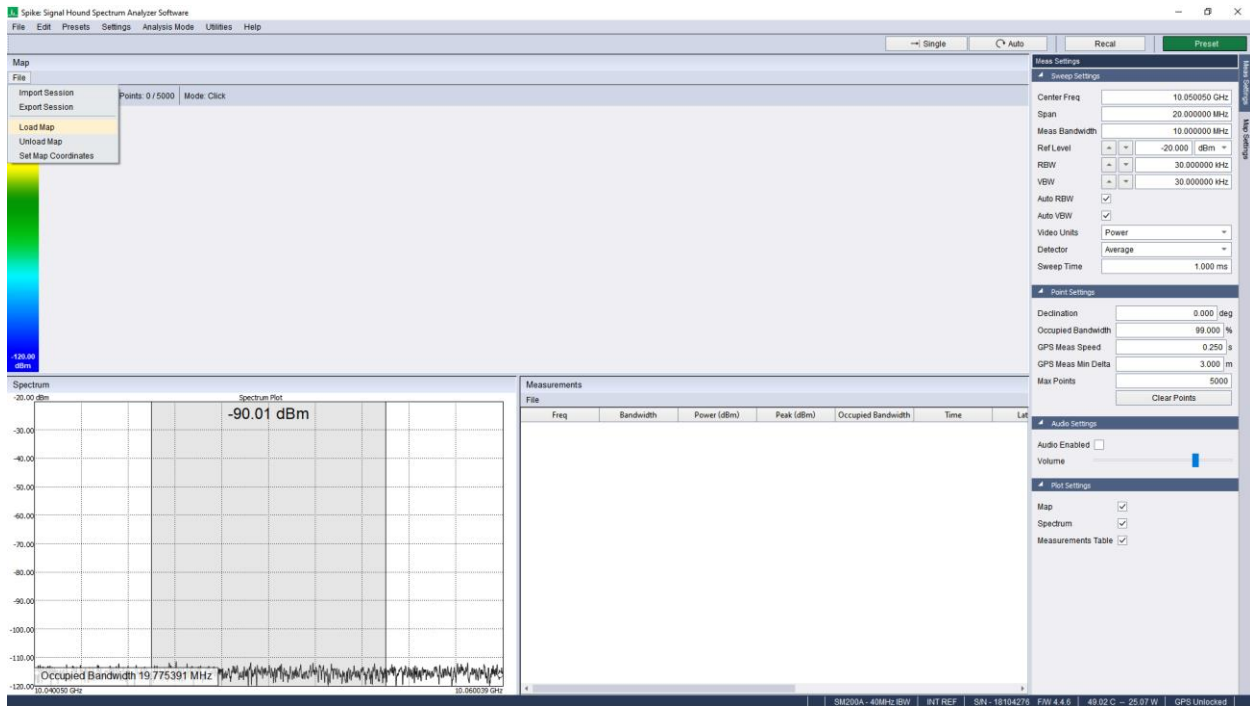


Figure 4: Spike Mapping Mode before importing map.

Map Import Guide

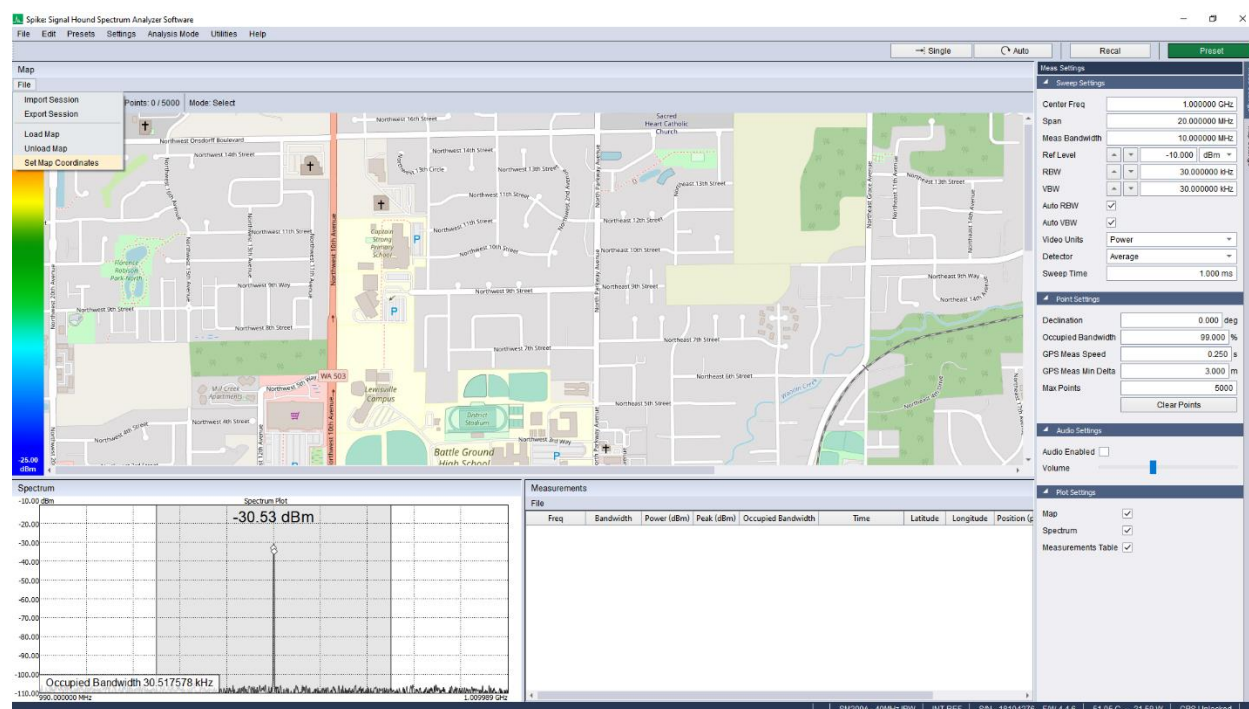


Figure 5: Spike Mapping Mode with OSM map imported and visible in map view area, ready to set coordinates.

Map Import Guide

2.5 Set the Georeferencing Coordinates in Spike

Click the *File* menu in the toolbar at the top of the map view area, choose *Set Map Coordinates*, and in the dialog that appears, enter the values shown in the Export panel of the OSM website.

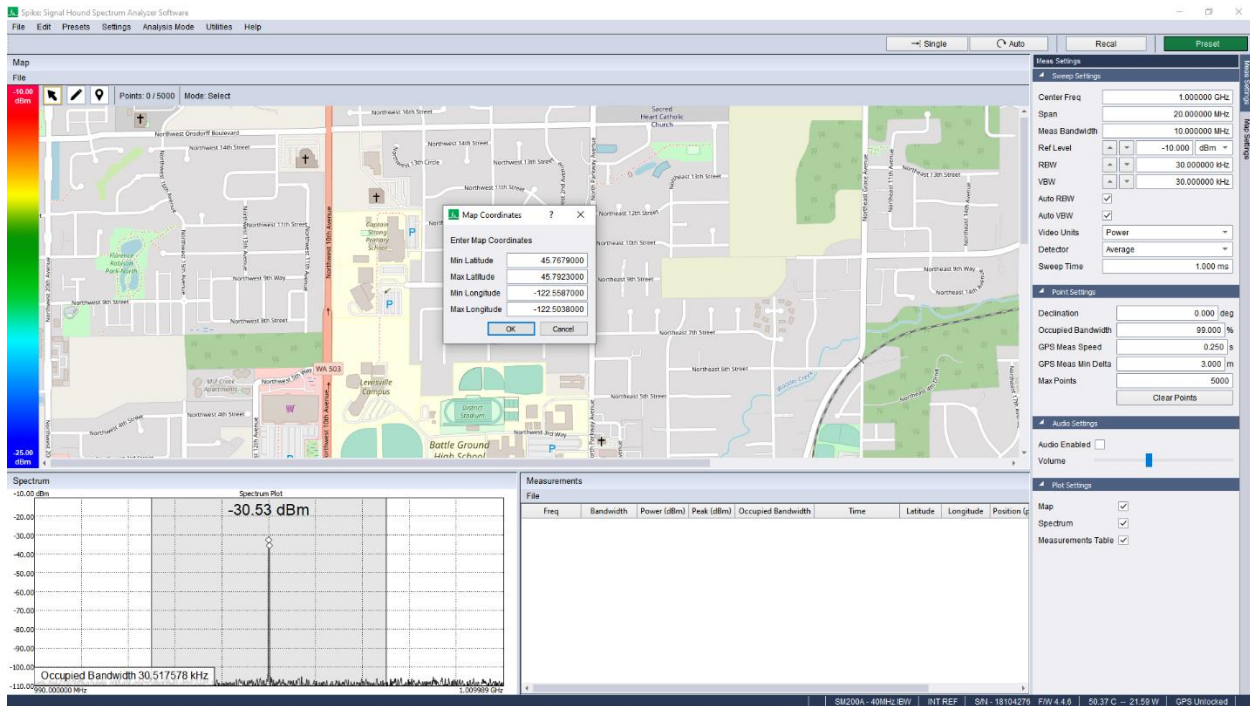


Figure 6: The Map referencing coordinates entry dialog in Spike.

Map Import Guide

2.6 Verify Correctness

Verify that the map is correctly georeferenced by doing the following.

- In Spike, click somewhere on the map to take a measurement and add a point.
 - The latitude and longitude coordinates of the point will be shown in a detail panel to the right of the map.

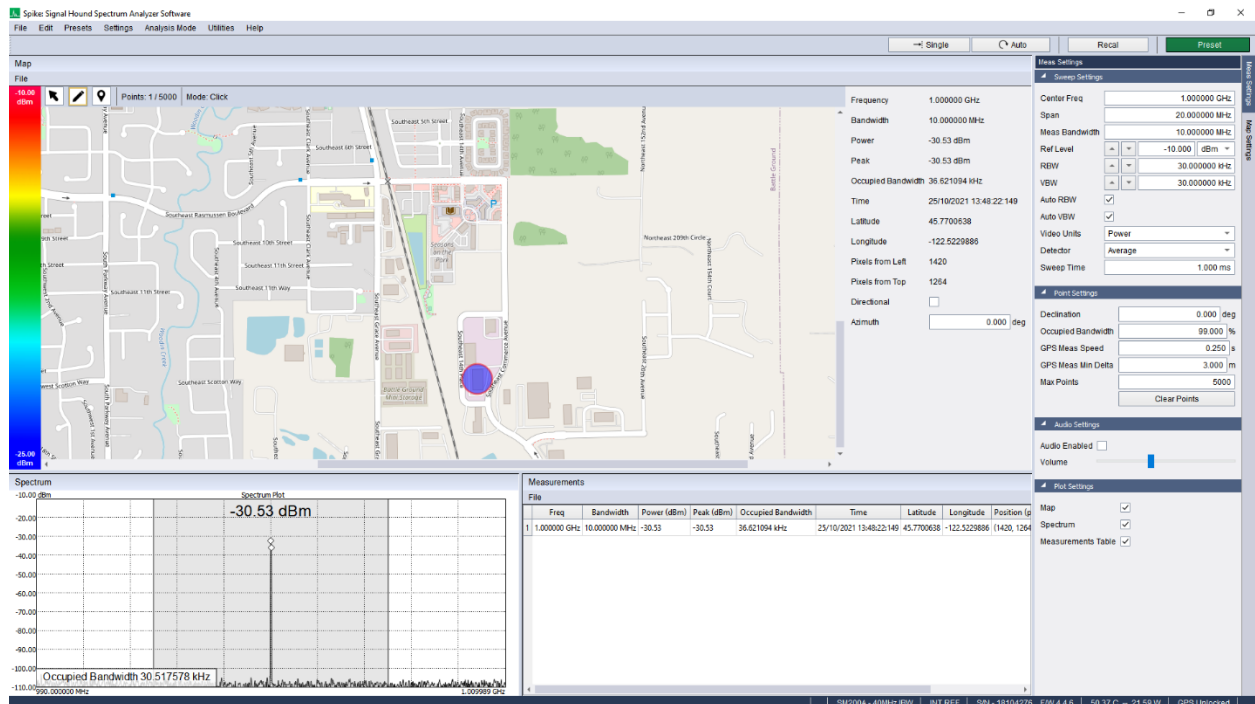
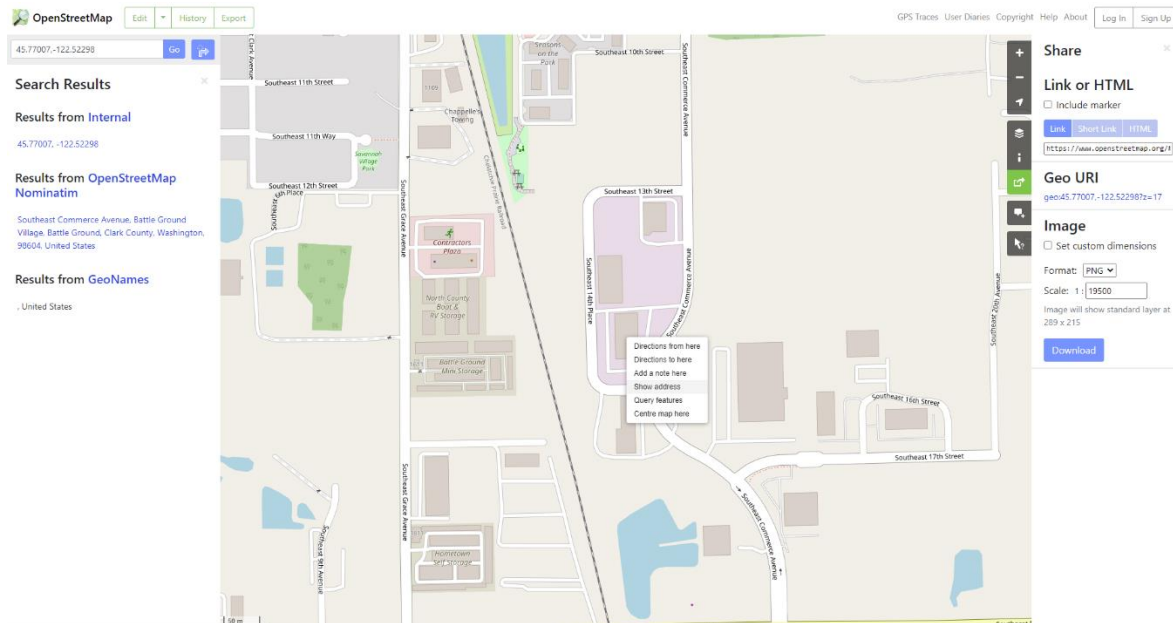


Figure 7: One measurement point with geocoordinates visible in the map detail panel.

- On the OSM website, right click the same location on the map, and select “Show address”.
 - The coordinates of the point will be shown in a detail panel to the left of the map.

Troubleshooting



- Verify that these coordinates are the same or very similar.

If the coordinates are off by a significant amount, check that the referencing coordinates were entered correctly in Spike. They should match the referencing coordinates from OSM at the time of image export.

As a last resort, re-download the image and re-enter the coordinates, being careful to heed the warning in [section 2.2](#).

3 Troubleshooting

If the map image is not showing in Spike, or not georeferencing properly, and you have followed the directions in [section 2.6](#), then contact support@signalhound.com.